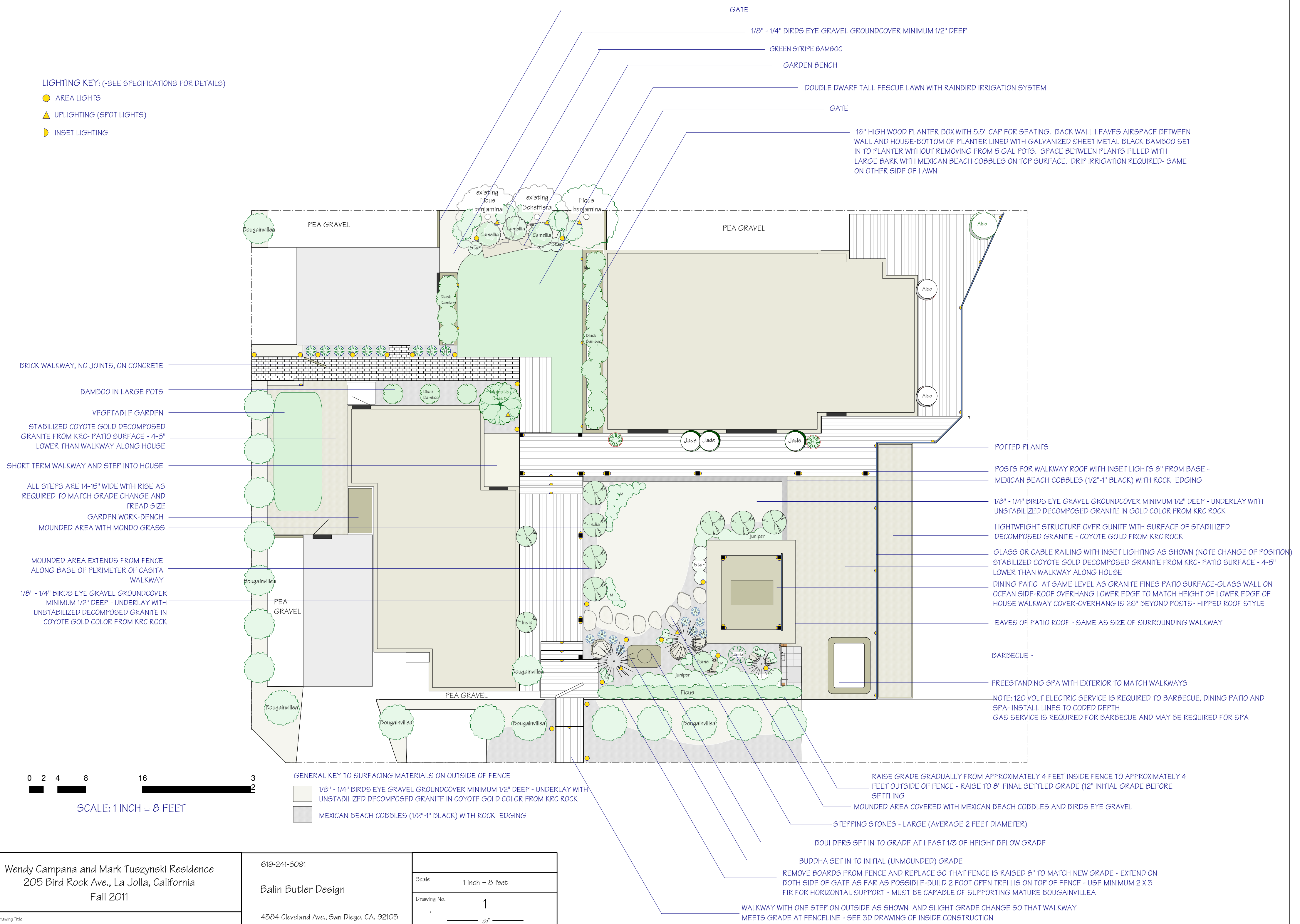


LIGHTING KEY: (-SEE SPECIFICATIONS FOR DETAILS)

- AREA LIGHTS
- ▲ UPLIGHTING (SPOT LIGHTS)
- ◻ INSET LIGHTING



GATE
 1/8" - 1/4" BIRDS EYE GRAVEL GROUNDCOVER MINIMUM 1/2" DEEP
 GREEN STRIPE BAMBOO
 GARDEN BENCH
 DOUBLE DWARF TALL FESCUE LAWN WITH RAINBIRD IRRIGATION SYSTEM
 GATE
 18" HIGH WOOD PLANTER BOX WITH 5.5" CAP FOR SEATING. BACK WALL LEAVES AIRSPACE BETWEEN WALL AND HOUSE-BOTTOM OF PLANTER LINED WITH GALVANIZED SHEET METAL BLACK BAMBOO SET IN TO PLANTER WITHOUT REMOVING FROM 5 GAL POTS. SPACE BETWEEN PLANTS FILLED WITH LARGE BARK WITH MEXICAN BEACH COBBLES ON TOP SURFACE. DRIP IRRIGATION REQUIRED- SAME ON OTHER SIDE OF LAWN

BRICK WALKWAY, NO JOINTS, ON CONCRETE
 BAMBOO IN LARGE POTS
 VEGETABLE GARDEN
 STABILIZED COYOTE GOLD DECOMPOSED GRANITE FROM KRC- PATIO SURFACE - 4-5" LOWER THAN WALKWAY ALONG HOUSE
 SHORT TERM WALKWAY AND STEP INTO HOUSE
 ALL STEPS ARE 14-15" WIDE WITH RISE AS REQUIRED TO MATCH GRADE CHANGE AND TREAD SIZE
 GARDEN WORK-BENCH
 MOUNDED AREA WITH MONDO GRASS
 MOUNDED AREA EXTENDS FROM FENCE ALONG BASE OF PERIMETER OF CASITA WALKWAY
 1/8" - 1/4" BIRDS EYE GRAVEL GROUNDCOVER MINIMUM 1/2" DEEP - UNDERLAY WITH UNSTABILIZED DECOMPOSED GRANITE IN COYOTE GOLD COLOR FROM KRC ROCK

POTTED PLANTS
 POSTS FOR WALKWAY ROOF WITH INSET LIGHTS 8" FROM BASE - MEXICAN BEACH COBBLES (1/2"-1" BLACK) WITH ROCK EDGING
 1/8" - 1/4" BIRDS EYE GRAVEL GROUNDCOVER MINIMUM 1/2" DEEP - UNDERLAY WITH UNSTABILIZED DECOMPOSED GRANITE IN GOLD COLOR FROM KRC ROCK
 LIGHTWEIGHT STRUCTURE OVER GUNITE WITH SURFACE OF STABILIZED DECOMPOSED GRANITE - COYOTE GOLD FROM KRC ROCK
 GLASS OR CABLE RAILING WITH INSET LIGHTING AS SHOWN (NOTE CHANGE OF POSITION) STABILIZED COYOTE GOLD DECOMPOSED GRANITE FROM KRC- PATIO SURFACE - 4-5" LOWER THAN WALKWAY ALONG HOUSE
 DINING PATIO AT SAME LEVEL AS GRANITE FINES PATIO SURFACE-GLASS WALL ON OCEAN SIDE-ROOF OVERHANG LOWER EDGE TO MATCH HEIGHT OF LOWER EDGE OF HOUSE WALKWAY COVER-OVERHANG IS 26" BEYOND POSTS- HIPPED ROOF STYLE
 EAVES OF PATIO ROOF - SAME AS SIZE OF SURROUNDING WALKWAY
 BARBECUE
 FREESTANDING SPA WITH EXTERIOR TO MATCH WALKWAYS
 NOTE: 120 VOLT ELECTRIC SERVICE IS REQUIRED TO BARBECUE, DINING PATIO AND SPA- INSTALL LINES TO CODED DEPTH
 GAS SERVICE IS REQUIRED FOR BARBECUE AND MAY BE REQUIRED FOR SPA

GENERAL KEY TO SURFACING MATERIALS ON OUTSIDE OF FENCE
 1/8" - 1/4" BIRDS EYE GRAVEL GROUNDCOVER MINIMUM 1/2" DEEP - UNDERLAY WITH UNSTABILIZED DECOMPOSED GRANITE IN COYOTE GOLD COLOR FROM KRC ROCK
 MEXICAN BEACH COBBLES (1/2"-1" BLACK) WITH ROCK EDGING

RAISE GRADE GRADUALLY FROM APPROXIMATELY 4 FEET INSIDE FENCE TO APPROXIMATELY 4 FEET OUTSIDE OF FENCE - RAISE TO 8" FINAL SETTLED GRADE (12" INITIAL GRADE BEFORE SETTLING)
 MOUNDED AREA COVERED WITH MEXICAN BEACH COBBLES AND BIRDS EYE GRAVEL
 STEPPING STONES - LARGE (AVERAGE 2 FEET DIAMETER)
 BOULDERS SET IN TO GRADE AT LEAST 1/3 OF HEIGHT BELOW GRADE
 BUDDHA SET IN TO INITIAL (UNMOUNDED) GRADE
 REMOVE BOARDS FROM FENCE AND REPLACE SO THAT FENCE IS RAISED 8" TO MATCH NEW GRADE - EXTEND ON BOTH SIDE OF GATE AS FAR AS POSSIBLE-BUILD 2 FOOT OPEN TRELLIS ON TOP OF FENCE - USE MINIMUM 2 X 3 FIR FOR HORIZONTAL SUPPORT - MUST BE CAPABLE OF SUPPORTING MATURE BOUGAINVILLEA
 WALKWAY WITH ONE STEP ON OUTSIDE AS SHOWN AND SLIGHT GRADE CHANGE SO THAT WALKWAY MEETS GRADE AT FENCELINE - SEE 3D DRAWING OF INSIDE CONSTRUCTION

Wendy Campana and Mark Tuszynski Residence
 205 Bird Rock Ave., La Jolla, California
 Fall 2011

619-241-5091
 Balin Butler Design
 4384 Cleveland Ave., San Diego, CA. 92103
 balin@balinButler.com
 www.balinButler.com

Scale	1 inch = 8 feet
Drawing No.	1 of 1

Drawing Title
 Landscape Plan