

SPECIFICATIONS

LIGHTING
 INSTALL 12V LIGHTING FIXTURES AS SHOWN ON PLAN. USE CODE ON PLAN FOR AREA LIGHTING AND UPLIGHTING.

CONNECTING VINES TO FENCES, WALLS, AND ARBORS
 TRAIN VINES ONTO FENCES WITH #6-#8 EYECREWS WITH 3/4" SHANK AND PLASTIC TIES. FAN PLANTS ACROSS FENCE.
 TRAIN VINES ONTO MASONRY WITH #6-#8 EYECREWS WITH 3/4" SHANK SCREWED INTO PLASTIC OR LEAD SHIELDS. FAN PLANTS ACROSS FENCE.

SOIL
 SOIL FOR GRADING AND BEDS: SAN DIEGO SELECT
 POTTING MIX FOR POTS: GOLD CUP PRIZE WINNING SOIL - BUTLERS MILLS INC. 6-10725-40200-5 FROM MISSION HILLS NURSERY OR OTHER SOURCE.

IRRIGATION
 GENERAL GUIDELINES FOR IRRIGATION
 WATER PLANTINGS WITH SPRAY IRRIGATION WHERE APPROPRIATE
 AVOID WATER SPRAY ON PATIO, HOUSE, FENCE AND SPA
 USE DRIP IRRIGATION AROUND PERIMETER OF YARD

LIVE WATER LINE TO ALL VALVES SHOULD NOT EXCEED 55 POUNDS
 USE EXISTING VALVE AND CLOCK IF ADEQUATE
 ADD DRIP VALVE - SEE BELOW

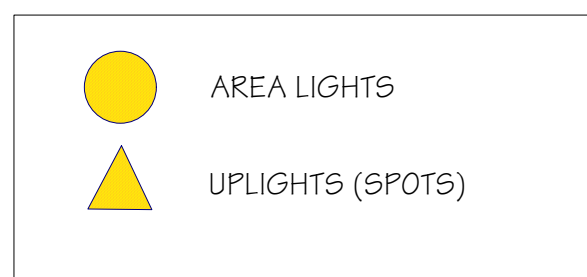
DRIP IRRIGATION
 VALVES: MUST BE LOW FLOW = .2 GPM MINIMUM FLOW CAPABILITY
 PRESSURE REGULATOR ON EACH VALVE = SENNINGER LO-FLOW, 20 PSI
 Y FILTER ON EACH VALVE
 1/2 INCH DRIP TUBING BURIED 3" DEEP, EROSION STAPLES EVERY 3'-5'
 RAINBIRD 1 OR 2 GPH EMITTERS INSTALLED INTO 1/2 INCH TUBING
 1/4 INCH "SPAGHETTI" TUBING FROM EMITTER TO SURFACE
 CAPPED AT END WITH BUG CAP AND STAKED IN PLACE
 FLUSH WITH GROUND
 ON ROOT BALL OF PLANT
 NOT AGAINST TRUNK OF PLANT

SPRAY IRRIGATION
 USE RAINBIRD IRRIGATION MATERIALS THROUGHOUT
 USE 3/4" SCHEDULE 40 PVC PIPE THROUGHOUT

MULCH
 MULCH ALL EXPOSED SOIL WITH 1/2" EARTH-GRO DECORATOR GROUNDCOVER BARK 0-36865-83521-1 ITEM #1835180 PROD #8835180 FROM HOME DEPOT. OTHER MULCH MAY BE SUBSTITUTED AS LONG AS FIR BARK CHIPS ARE NOT LARGER THAN 1/2".
 MULCH AREAS INDICATED AS COBBLES WITH MEXICAN BEACH COBBLES (1/2" - 1")
 INSIDE GARDEN BEDS - 80% BIRDSEYE GRAVEL (1/4" - 1/2") AND 20% BIRDSEYE GRAVEL (3/4" - 1 1/2") (AVAILABLE FROM KRC ROCK, POWAY).

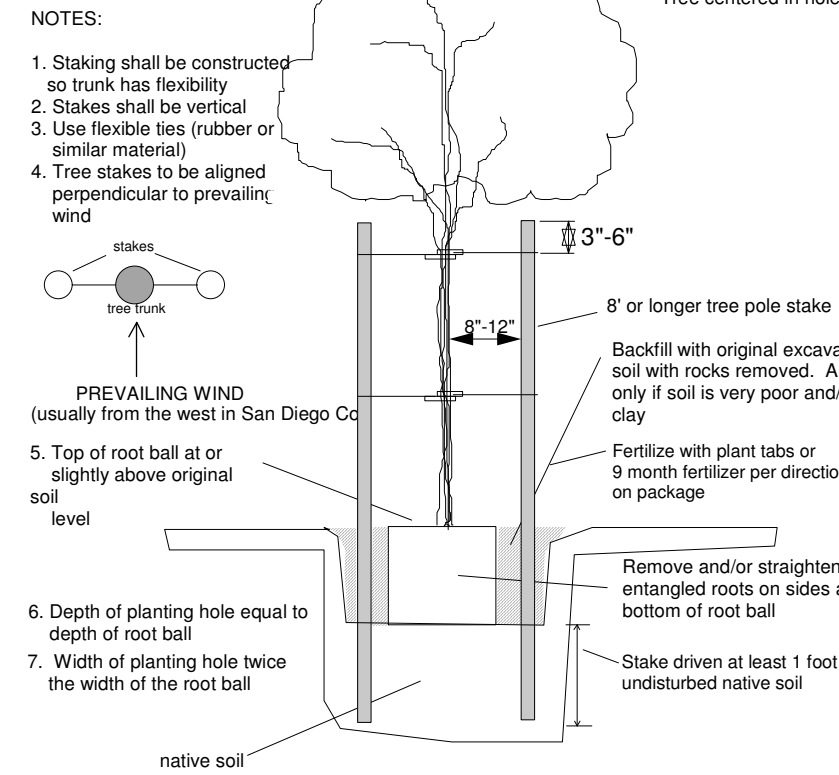
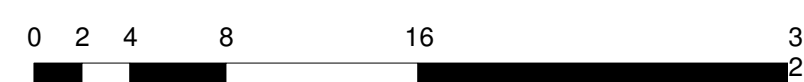
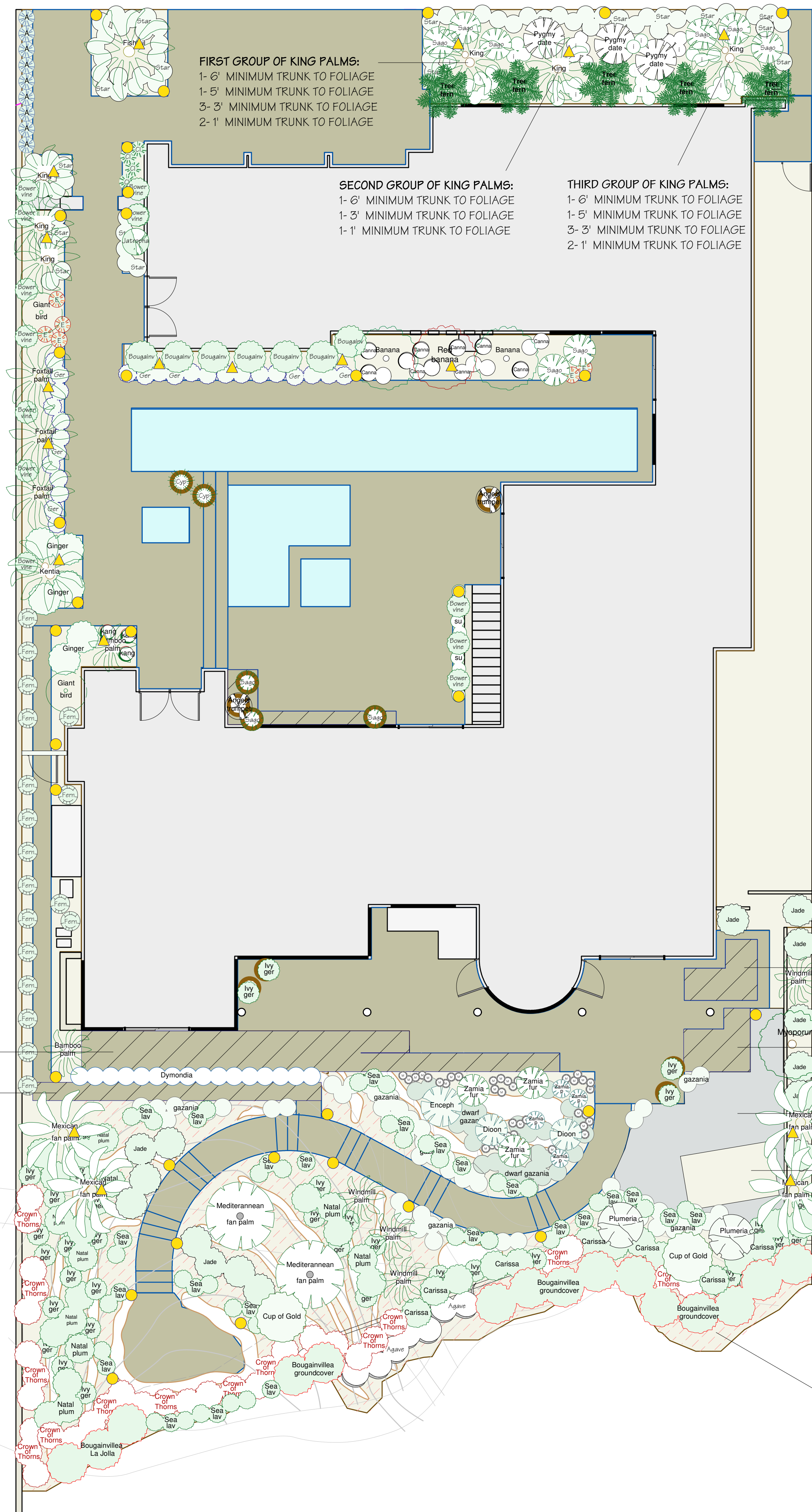
LOCATIONS OF PROPERTY LINES AND SETBACKS HAVE NOT BEEN VERIFIED. OWNER OR CONTRACTOR WILL CONTACT SAN DIEGO CITY DEVELOPMENT SERVICES DEPARTMENT FOR REQUIRED INFORMATION REGARDING THE CONSTRUCTION AND SITING OF WALLS AND OTHER LANDSCAPE FEATURES AND ENSURE THAT ALL WORK CONFORMS TO THE SAN DIEGO MUNICIPAL CODE.

LIGHTING KEY



PLANT LIST

Code	Nursery name	Common name	Size
A	Agapanthus africanus Blue (Full size)	Lily of the Nile	5 gallon
Agave	Agave attenuata	Agave	5 gallon
Ginger	Alpina speciosa	Shell ginger	5 gallon
Kang	Anigozanthos flavidus	Red kangaroo paw	5 gallon
King	Archontophoenix cunninghamiana	King palm	various sizes, see plan
Bougainv	Bougainvillea	Royal Purple - pure purple	15 gallon
Bougainvillea	Bougainvillea	Crimson Jewel - sprawling groundcover	5 gallon
Angel trumpet	Brugmansia versicolor - Pink	Pink Angel s trumpet	5 gallon
Canna	Canna	Red canna lily with maroon leaves	2 gallon
Canna	Canna Tropicana	Orange canna lily	2 gallon
Natal plum	Carissa macrocarpa 'Green Carpet	Carissa groundcover	5 gallon
Carissa	Carissa macrocarpa Tuttle	Carissa	5 gallon
Fishtail	Caryota gigas	Mountain fishtail	5' minimum trunk height to base of foliage
Mediterranean Fan palm	Chamaerops humilis	Mediterranean fan palm	multi-trunk - 36" minimum diameter foliage
Clivia	Clivia miniata	Kaffir lily	2 gallon
Jade	Crassula argentea	Jade plant	2 gallon
Tree fern	Cyathea cooperi (Alsophila australis)	Australian tree fern	15 gallon
Sago	Cycas revoluta	Sago palm	32" minimum diameter foliage
Cyp	Cyperus papyrus	Cyperus	5 gallon
Dioon	Dioon edule	Dioon	32" minimum diameter foliage
Iceplant	Drosanthemum floribundum	Rosea Iceplant. (identical to neighbors, common)	flats
Dymondia	Dymondia	Dymondia	flats
Bamboo palm	Dypsis lutescens	Bamboo palm	5' minimum plant height to top of foliage
Enceph	Encephalartos ferox	Cycad	32" minimum diameter foliage
Red banana	Ensete ventricosum 'Maurellii	Red leafed abysinnium banana	15 gallon
Banana	Ensete ventricosum 'green	Green leafed abysinnium banana	15 gallon
E	Epidendrum obrienianum	Reed stemmed orchid-mixed colors	2 gallon
Crown of thorns	Euphorbia millii (eplendens)	crown of thorns, 3 feet high with good foliage	5 gallon
dwarf gazania	Gazania-dwarf	Gazania, gray 1-2" high groundcover, small yellow flowers	flats
Gazania	Gazania-trailing	Gazania, leaves green, orange and yellow flowers, trailing	flats or pots
Ger	Geranium incanum	Geranium purple	1 gallon
Kentia	Howea forsteriana	Kentia palm	5' minimum trunk height to base of foliage
i	Impatiens walleriana - mixed	Mixed impatiens-white, pink, lavender	1 gallon
Jatropha	Jatropha integerrima	Jatropha	5 gallon
Sea lav	Limonium perezii	Sea lavender	
Myoporum	Myoporum laetum	Myoporum	5 gallon
M	Ophiopogon japonica	Mondo grass	1 gallon
Bower vine	Pandorea jasminoides rosea	Bower vine	15 gallon
Ivy ger	Pelargonium pettatum blizzard series lavender	Ivy geranium, lavender single flowers	1 gallon
Pygmy date	Phoenix roebelenii	Pygmy date palm	multi-trunk - 36" minimum diameter foliage
Plumeria	Plumeria rubra	Plumeria	15 gallon
Cup of gold	Solandra maxima	Cup of gold vine	5 gallon
Giant bird	Strelitzia nicolai	Giant bird of paradise	15 gallon
Su	Sutera white	White bacopa	4 inch pots
Star	Trachelospermum jasminoides	Star jasmine	5 gallon
Windmill palm	Trachycarpus fortunei	Windmill palm	4' minimum trunk height to base of foliage
Mexican fan palm	Washingtonia robusta	Mexican fan palm	5' minimum trunk height to base of foliage
Foxtail palm	Wodyetia bifurcata	Foxtail palm	5' minimum trunk height to base of foliage
Zamia fur	Zamia furfuracea	Zamia	24" minimum diameter foliage
Zamia	Zamia amblyphyllidea	Zamia	32" minimum diameter foliage
Zamia p	Zamia pumila	Zamia	16" minimum diameter foliage



TREE, PALM, AND SHRUB PLANTING AND STAKING detail

Project ID	Scale	1 inch = 8 feet
Sheet	Drawing No.	1 of 1
Project Title	Date	June 7, 2005
Client	Designer	Landscaping

Grimes Residence
 La Jolla, California
 Spring 2005

Bain Butler Design
 619-291-2663

EXPAND PATIO
 EXPAND PATIO
 RUBBERIZED PLAY SURFACE, COLOR AND FINISH TO BE DECIDED
 PLAY STRUCTURE
 RED DASHED PATTERN - PINK ICEPLANT